

Human BAFF Protein; His Tag

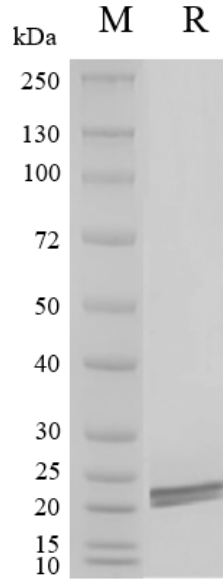
Product Information

Product Name	Human BAFF Protein; His Tag
Storage temp.	Store at $\leq -70^{\circ}\text{C}$, stable for 6 months after receipt. Recommend to aliquot the protein into smaller quantities for optimal storage. Please minimize freeze-thaw cycles.
Catalog# / Size	GM-87735RP-100 / 100 μg GM-87735RP-1000 / 1 mg

Protein Information

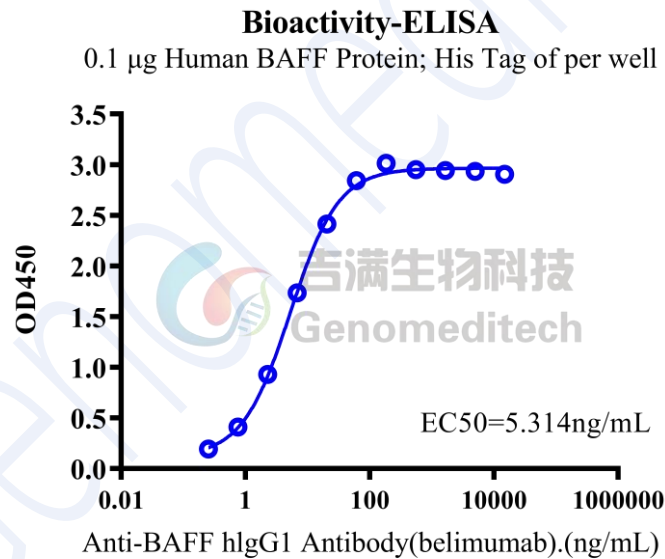
Alternative Names	TNFSF13B,BAFF,BL YS,CD257,DTL,TALL1,THANK,TNFSF20,ZTNF4
Source	Human BAFF Protein; His Tag (GM-87735RP) is expressed from human 293 cells (HEK-293). It contains AA Ala134-Leu285 (Accession # Q9Y275-1). This protein carries a His tag at the N-terminus.
Purity	> 95% as determined by SDS-PAGE
Endotoxin	< 1 EU/ μg , determined by LAL gel clotting assay
Predicted Mol Mass	17.4 KDa
Formulation	Supplied as a 0.2 μm filtered solution of PBS, pH7.4.
Description	<p>BAFF (B-cell activating factor, also known as TNFSF13B) is an important cytokine that belongs to the tumor necrosis factor superfamily (TNF superfamily). It is crucial for the development, survival, and activation of B cells. BAFF is primarily secreted by plasma cells, dendritic cells, and other immune cells, playing various immunological roles.</p> <p>BAFF binds to BAFF receptors on the surface of B cells, promoting their maturation and survival, particularly in the maintenance of peripheral B cell populations. BAFF not only affects B cells but can also stimulate T cells in certain contexts, thus participating in the overall regulation of the immune response. Overexpression of BAFF is linked to several autoimmune diseases, including systemic lupus erythematosus (SLE) and rheumatoid arthritis, as it enhances the survival and activation of autoreactive B cells. BAFF plays important roles in the pathogenesis of various infections and tumors.</p> <p>In summary, BAFF is a key cytokine involved in the regulation of B cell functions and is closely linked to various disease states. Its study aids in developing new therapeutic strategies.</p>

SDS-PAGE



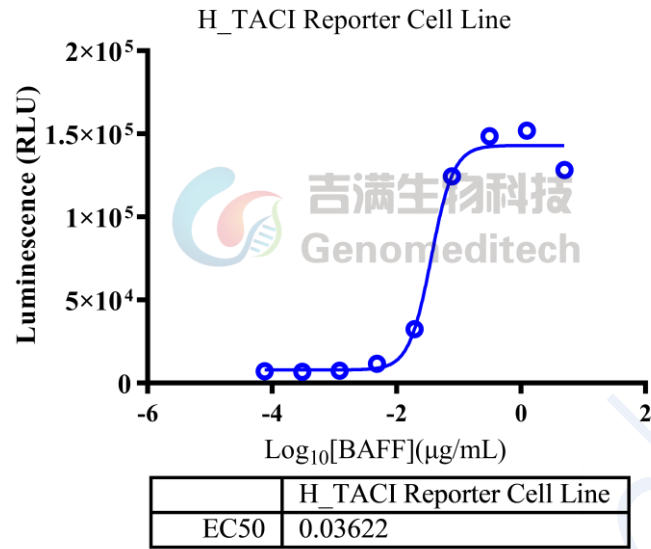
On SDS-PAGE under reducing (R) condition. The gel was stained overnight with Coomassie Blue. The purity of the protein is greater than 95%.

Bioactivity-ELISA



Human BAFF Protein; His Tag (Catalog # GM-87735RP) was immobilized at 1 μ g/ml (100 μ L/well).
 Increasing concentrations of Anti-BAFF hlgG1 Antibody(belimumab) (Catalog # GM-87690AB) were added.

Bioactivity-CELL BASE



Human BAFF Protein; His Tag (Catalog # GM-87735RP) was added into H_TACI Reporter Cell Line (Catalog # GM-C35041) and stimulates BAFF/TACI signals.